

CALIFORNIA  
MANUFACTURERS  
& TECHNOLOGY  
ASSOCIATION

# Manufacturing Voting Record / Senators

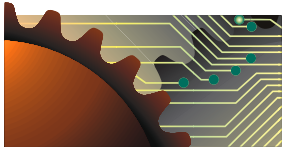
CMTA's Manufacturing Voting Record shows that 81 percent of state legislators voted against manufacturers' interests on major bills more than half the time in the 2005 legislative session.

Click bills to view online

## Senators Record

Click to view online

		AB 153	AB 1698	AB 391	AB 48	Confirmation of Andrea Hoch	Confirmation of Cindy Tuck	SB 1023	SB 109	SB 174	SB 426	SB 484	SB 600
		<b>CMTA: OPPOSE</b>	<b>OPPOSE</b>	<b>OPPOSE</b>	<b>OPPOSE</b>	<b>SUPPORT</b>	<b>SUPPORT</b>	<b>OPPOSE</b>	<b>OPPOSE</b>	<b>OPPOSE</b>	<b>OPPOSE</b>	<b>OPPOSE</b>	<b>OPPOSE</b>
		Increases litigation costs by allowing AG to recover all costs in actions alleging anti-competitive practices	Mandates employer health care for dependants until they are 26 years old	Forces employers to pay unemployment benefits for workers' missing work during trade disputes	Increases minimum wage	Will continue implementation of workers' compensation reforms		Adds costly penalties to the state's reformed workers' compensation system	Allows criminal prosecution for minor air violations	Expands "sue your boss" provision and increases litigation and costs	Slows the construction of LNG terminals	Creates duplicative and costly reporting for cosmetic manufacturers	Creates chemical monitoring program with no scientific basis or designated funding
Senators	Record												
Aanestad (R)	12-0 100%	NO	NO	NO	NO	YES	YES	NO	NO	NO	NO	NO	NO
Ackerman (R)	12-0 100%	NO	NO	NO	NO	YES	YES	NO	NO	NO	NO	NO	NO
Alarcon (D)	1-11 8%	YES	YES	YES	YES	NO	NO	YES	YES	YES	YES	YES	Abstained
Alquist (D)	0-12 0%	YES	YES	YES	YES	NO	NO	YES	YES	YES	YES	YES	YES
Ashburn (R)	12-0 100%	NO	NO	NO	NO	YES	YES	NO	NO	NO	NO	NO	NO
Battin (R)	12-0 100%	Abstained	NO	Abstained	NO	YES	YES	NO	NO	NO	NO	NO	NO
Bowen (D)	2-10 17%	YES	YES	YES	YES	NO	NO	YES	Abstained	YES	YES	YES	Abstained
Campbell (R)	12-0 100%	NO	NO	NO	NO	YES	YES	NO	NO	NO	NO	NO	NO
Cedillo (D)	1-11 8%	YES	YES	Abstained	YES	NO	NO	YES	YES	YES	YES	YES	YES
Chesbro (D)	0-12 0%	YES	YES	YES	YES	NO	NO	YES	YES	YES	YES	YES	YES
Cox (R)	12-0 100%	NO	NO	NO	NO	YES	YES	NO	NO	NO	NO	NO	NO
Denham (R)	12-0 100%	Abstained	Abstained	NO	NO	YES	YES	NO	NO	NO	NO	NO	NO
Ducheny (D)	3-9 25%	YES	YES	YES	YES	NO	Abstained	YES	NO	Abstained	YES	YES	YES
Dunn (D)	0-12 0%	YES	YES	YES	YES	NO	NO	YES	YES	YES	YES	YES	YES
Dutton (R)	11-1 92%	NO	NO	NO	NO	YES	NO	NO	NO	NO	NO	NO	NO
Escutia (D)	2-10 17%	YES	YES	YES	YES	Abstained	NO	YES	YES	YES	Abstained	YES	YES
Figueroa (D)	0-12 0%	YES	YES	YES	YES	NO	NO	YES	YES	YES	YES	YES	YES
Florez (D)	3-9 25%	YES	YES	YES	YES	Abstained	YES	YES	NO	YES	YES	YES	YES
Hollingsworth (R)	12-0 100%	NO	NO	NO	NO	YES	YES	NO	NO	NO	NO	NO	NO
Kehoe (D)	1-11 8%	YES	YES	YES	YES	Abstained	NO	YES	YES	YES	YES	YES	YES
Kuehl (D)	0-12 0%	YES	YES	YES	YES	NO	NO	YES	YES	YES	YES	YES	YES
Lowenthal (D)	1-11 8%	YES	YES	YES	YES	Abstained	NO	YES	YES	YES	YES	YES	YES
Machado (D)	6-6 50%	YES	Abstained	NO	YES	YES	NO	Abstained	NO	YES	Abstained	YES	YES
Maldonado (R)	11-1 92%	NO	NO	NO	NO	YES	YES	NO	NO	NO	YES	NO	Abstained
Margett (R)	12-0 100%	NO	NO	NO	NO	YES	YES	NO	NO	NO	NO	NO	NO
McClintock (R)	12-0 100%	NO	NO	NO	NO	YES	YES	NO	NO	NO	NO	NO	NO
Migden (D)	1-11 8%	YES	YES	YES	YES	YES	NO	YES	YES	YES	YES	YES	YES
Morrow (R)	12-0 100%	NO	Abstained	NO	NO	YES	Abstained	Abstained	NO	NO	NO	NO	NO
Murray (D)	6-6 50%	Abstained	Abstained	Abstained	YES	YES	NO	Abstained	YES	YES	YES	YES	Abstained
Ortiz (D)	1-11 8%	YES	YES	YES	YES	Abstained	NO	YES	YES	YES	YES	YES	YES
Perata (D)	2-10 17%	YES	YES	Abstained	YES	YES	NO	YES	YES	YES	YES	YES	YES
Poochigian (R)	12-0 100%	Abstained	NO	NO	NO	YES	YES	NO	NO	NO	NO	NO	NO
Romero (D)	1-11 8%	YES	YES	YES	YES	YES	NO	YES	YES	YES	YES	YES	YES
Runner (R)	12-0 100%	NO	NO	Abstained	NO	YES	YES	NO	NO	Abstained	NO	NO	NO
Scott (D)	2-10 17%	YES	YES	YES	YES	Abstained	NO	YES	YES	Abstained	YES	YES	YES
Simitian (D)	0-12 0%	YES	YES	YES	YES	NO	NO	YES	YES	YES	YES	YES	YES
Soto (D)	1-11 8%	YES	YES	YES	YES	Abstained	NO	YES	YES	YES	YES	YES	YES
Speier (D)	1-11 8%	YES	YES	YES	YES	Abstained	NO	YES	YES	YES	YES	YES	YES
Torlakson (D)	1-11 8%	YES	YES	YES	YES	YES	NO	YES	YES	YES	YES	YES	YES
Vincent (D)	2-10 17%	YES	YES	YES	YES	Abstained	NO	YES	YES	YES	YES	YES	Abstained
	Bill result	<b>VETOED</b> by Gov.	<b>VETOED</b> by Gov.	<b>VETOED</b> by Gov.	<b>VETOED</b> by Gov.	<b>CONFIRMED</b>	<b>FAILED</b>	<b>VETOED</b> by Gov.	<b>FAILED</b> PASSAGE	<b>VETOED</b> by Gov.	<b>FAILED</b> PASSAGE	<b>SIGNED</b> by Gov.	<b>VETOED</b> by Gov.



CALIFORNIA  
MANUFACTURERS  
& TECHNOLOGY  
ASSOCIATION

### Assembleymembers

Click to view online

### Record

# Manufacturing Voting Record / Assemblymembers

CMTA's Manufacturing Voting Record shows that 81 percent of state legislators voted against manufacturers' interests on major bills more than half the time in the 2005 legislative session.

Click bills to view online

		<b>AB 153</b> CMTA: <b>OPPOSE</b> Increases litigation costs by allowing AG to recover all costs in actions alleging anti-competitive practices	<b>AB 1698</b> <b>OPPOSE</b> Mandates employer health care for dependants until they are 26 years old	<b>AB 1700</b> <b>OPPOSE</b> Severely restricts settlements and protective orders in litigation	<b>AB 391</b> <b>OPPOSE</b> Forces employers to pay unemployment benefits for workers' missing work during trade disputes	<b>AB 48</b> <b>OPPOSE</b> Increases minimum wage	<b>AB 815</b> <b>OPPOSE</b> Gives hazardous waste regulatory authority to an agency with no manufacturing knowledge or experience	<b>SB 1023</b> <b>OPPOSE</b> Adds costly penalties to the state's reformed workers' compensation system	<b>SB 109</b> <b>OPPOSE</b> Allows criminal prosecution for minor air violations	<b>SB 174</b> <b>OPPOSE</b> Expands "sue your boss" provision and increases litigation and costs	<b>SB 426</b> <b>OPPOSE</b> Slows the construction of LNG terminals	<b>SB 484</b> <b>OPPOSE</b> Creates duplicative and costly reporting for cosmetic manufacturers	<b>SB 600</b> <b>OPPOSE</b> Creates chemical monitoring program with no scientific basis or designated funding
<b>Aghazarian (R)</b>	11-1 <b>92%</b>	YES	NO	NO	NO	NO	NO	NO	NO	NO	NO	NO	NO
<b>Arambula (D)</b>	3-9 <b>25%</b>	YES	YES	Abstained	Abstained	YES	YES	YES	YES	YES	NO	YES	YES
<b>Baca, Jr. (D)</b>	2-10 <b>17%</b>	YES	YES	YES	YES	YES	YES	YES	NO	YES	NO	YES	YES
<b>Bass (D)</b>	0-12 <b>0%</b>	YES	YES	YES	YES	YES	YES	YES	YES	YES	YES	YES	YES
<b>Benoit (R)</b>	11-1 <b>92%</b>	YES	NO	NO	NO	NO	NO	NO	NO	NO	NO	NO	NO
<b>Berg (D)</b>	0-12 <b>0%</b>	YES	YES	YES	YES	YES	YES	YES	YES	YES	YES	YES	YES
<b>Bermudez (D)</b>	0-12 <b>0%</b>	YES	YES	YES	YES	YES	YES	YES	YES	YES	YES	YES	YES
<b>Blakeslee (R)</b>	12-0 <b>100%</b>	Abstained	NO	NO	NO	NO	NO	NO	NO	NO	NO	NO	NO
<b>Bogh (R)</b>	11-1 <b>92%</b>	YES	NO	NO	NO	NO	NO	NO	NO	NO	NO	NO	NO
<b>Calderon (D)</b>	4-8 <b>33%</b>	YES	YES	Abstained	YES	YES	YES	YES	NO	NO	YES	NO	YES
<b>Canciamilla (D)</b>	5-7 <b>42%</b>	YES	YES	Abstained	YES	YES	YES	YES	NO	NO	NO	NO	YES
<b>Chan (D)</b>	0-12 <b>0%</b>	YES	YES	YES	YES	YES	YES	YES	YES	YES	YES	YES	YES
<b>Chavez (D)</b>	3-9 <b>25%</b>	YES	YES	Abstained	YES	YES	YES	YES	NO	YES	YES	NO	YES
<b>Chu (D)</b>	0-12 <b>0%</b>	YES	YES	YES	YES	YES	YES	YES	YES	YES	YES	YES	YES
<b>Cogdill (R)</b>	10-2 <b>83%</b>	YES	NO	NO	NO	NO	NO	NO	NO	NO	NO	YES	NO
<b>Cohn (D)</b>	4-8 <b>33%</b>	YES	YES	NO	YES	YES	YES	YES	Abstained	YES	YES	NO	NO
<b>Coto (D)</b>	2-10 <b>17%</b>	YES	YES	Abstained	YES	YES	YES	YES	NO	YES	YES	YES	YES
<b>Daucher (R)</b>	11-1 <b>92%</b>	YES	NO	NO	NO	NO	NO	NO	NO	NO	NO	NO	NO
<b>De La Torre (D)</b>	0-12 <b>0%</b>	YES	YES	YES	YES	YES	YES	YES	YES	YES	YES	YES	YES
<b>DeVore (R)</b>	11-1 <b>92%</b>	YES	NO	NO	NO	NO	NO	NO	NO	NO	NO	NO	NO
<b>Dymally (D)</b>	2-10 <b>17%</b>	YES	YES	Abstained	YES	YES	YES	YES	YES	YES	YES	NO	YES
<b>Emmerson (R)</b>	11-1 <b>92%</b>	YES	Abstained	NO	NO	NO	NO	Abstained	NO	NO	NO	NO	NO
<b>Evans (D)</b>	0-12 <b>0%</b>	YES	YES	YES	YES	YES	YES	YES	YES	YES	YES	YES	YES
<b>Frommer (D)</b>	0-12 <b>0%</b>	YES	YES	YES	YES	YES	YES	YES	YES	YES	YES	YES	YES
<b>Garcia (R)</b>	11-1 <b>92%</b>	YES	NO	NO	NO	NO	NO	NO	NO	NO	NO	NO	NO
<b>Goldberg (D)</b>	0-12 <b>0%</b>	YES	YES	YES	YES	YES	YES	YES	YES	YES	YES	YES	YES
<b>Hancock (D)</b>	1-11 <b>8%</b>	YES	YES	NO	YES	YES	YES	YES	YES	YES	YES	YES	YES
<b>Harman (R)</b>	10-2 <b>83%</b>	YES	NO	NO	NO	NO	NO	NO	NO	NO	NO	YES	NO
<b>Haynes (R)</b>	11-1 <b>92%</b>	NO	NO	NO	NO	NO	NO	NO	NO	NO	NO	YES	NO
<b>Horton (D)</b>	2-10 <b>17%</b>	YES	YES	Abstained	YES	YES	YES	YES	Abstained	YES	YES	YES	YES
<b>Horton (R)</b>	10-2 <b>83%</b>	YES	NO	NO	NO	NO	NO	NO	NO	NO	NO	YES	NO
<b>Houston (R)</b>	11-1 <b>92%</b>	YES	NO	NO	NO	NO	NO	NO	NO	NO	NO	NO	NO
<b>Huff (R)</b>	11-1 <b>92%</b>	YES	NO	NO	NO	NO	NO	NO	NO	NO	NO	NO	NO
<b>Jones (D)</b>	0-12 <b>0%</b>	YES	YES	YES	YES	YES	YES	YES	YES	YES	YES	YES	YES
<b>Karnette (D)</b>	2-10 <b>17%</b>	YES	YES	Abstained	YES	YES	YES	YES	Abstained	YES	YES	YES	YES
<b>Keene (R)</b>	11-1 <b>92%</b>	YES	NO	Abstained	NO	NO	NO	NO	NO	NO	NO	NO	NO
<b>Klehs (D)</b>	0-12 <b>0%</b>	YES	YES	YES	YES	YES	YES	YES	YES	YES	YES	YES	YES
<b>Koretz (D)</b>	1-11 <b>8%</b>	YES	YES	YES	YES	YES	YES	YES	YES	YES	YES	Abstained	YES
<b>Laird (D)</b>	0-12 <b>0%</b>	YES	YES	YES	YES	YES	YES	YES	YES	YES	YES	YES	YES
Continued on Page 3	<b>Bill result</b>	<b>VETOED</b> by Gov.	<b>VETOED</b> by Gov.	<b>FAILED PASSAGE</b>	<b>VETOED</b> by Gov.	<b>VETOED</b> by Gov.	<b>FAILED PASSAGE</b>	<b>VETOED</b> by Gov.	<b>FAILED PASSAGE</b>	<b>VETOED</b> by Gov.	<b>FAILED PASSAGE</b>	<b>SIGNED</b> by Gov.	<b>VETOED</b> by Gov.



CALIFORNIA  
MANUFACTURERS  
& TECHNOLOGY  
ASSOCIATION

**Assemblymembers**

Click to view online

**Record**

# Manufacturing Voting Record / Assemblymembers

CMTA's Manufacturing Voting Record shows that 81 percent of state legislators voted against manufacturers' interests on major bills more than half the time in the 2005 legislative session.

Click bills to view online

		<b>AB 153</b>	<b>AB 1698</b>	<b>AB 1700</b>	<b>AB 391</b>	<b>AB 48</b>	<b>AB 815</b>	<b>SB 1023</b>	<b>SB 109</b>	<b>SB 174</b>	<b>SB 426</b>	<b>SB 484</b>	<b>SB 600</b>
		<b>OPPOSE</b>	<b>OPPOSE</b>	<b>OPPOSE</b>	<b>OPPOSE</b>	<b>OPPOSE</b>	<b>OPPOSE</b>	<b>OPPOSE</b>	<b>OPPOSE</b>	<b>OPPOSE</b>	<b>OPPOSE</b>	<b>OPPOSE</b>	<b>OPPOSE</b>
		Increases litigation costs by allowing AG to recover all costs in actions alleging anti-competitive practices	Mandates employer health care for dependants until they are 26 years old	Severely restricts settlements and protective orders in litigation	Forces employers to pay unemployment benefits for workers' missing work during trade disputes	Increases minimum wage	Gives hazardous waste regulatory authority to an agency with no manufacturing knowledge or experience	Adds costly penalties to the state's reformed workers' compensation system	Allows criminal prosecution for minor air violations	Expands "sue your boss" provision and increases litigation and costs	Slows the construction of LNG terminals	Creates duplicative and costly reporting for cosmetic manufacturers	Creates chemical monitoring program with no scientific basis or designated funding
LaMalfa (R)	11-1 92%	YES	NO	NO	NO	NO	NO	NO	NO	NO	NO	NO	NO
La Suer (R)	11-1 92%	YES	NO	NO	NO	NO	NO	NO	NO	NO	NO	NO	NO
Leno (D)	0-12 0%	YES	YES	YES	YES	YES	YES	YES	YES	YES	YES	YES	YES
Leslie (R)	11-1 92%	YES	NO	NO	NO	NO	Abstained	NO	NO	NO	NO	NO	NO
Levine (D)	0-12 0%	YES	YES	YES	YES	YES	YES	YES	YES	YES	YES	YES	YES
Lieber (D)	0-12 0%	YES	YES	YES	YES	YES	YES	YES	YES	YES	YES	YES	YES
Liu (D)	2-10 17%	YES	YES	YES	YES	YES	YES	Abstained	YES	Abstained	YES	YES	YES
Matthews (D)	9-3 75%	YES	YES	NO	NO	YES	NO	NO	NO	NO	NO	NO	NO
Maze (R)	11-1 92%	YES	NO	NO	NO	NO	NO	NO	NO	NO	NO	NO	NO
McCarthy (R)	11-1 92%	YES	NO	NO	NO	NO	NO	NO	NO	NO	NO	NO	NO
McLeod (D)	2-10 17%	YES	YES	Abstained	YES	YES	YES	YES	NO	YES	YES	YES	YES
Montanez (D)	1-11 8%	YES	YES	YES	YES	YES	YES	YES	YES	YES	Abstained	YES	YES
Mountjoy (R)	11-1 92%	YES	NO	NO	NO	NO	NO	NO	NO	NO	NO	NO	NO
Mullin (D)	0-12 0%	YES	YES	YES	YES	YES	YES	YES	YES	YES	YES	YES	YES
Nakanishi (R)	11-1 92%	YES	NO	NO	NO	NO	NO	NO	NO	NO	NO	NO	NO
Nation (D)	1-11 8%	YES	YES	YES	YES	YES	YES	YES	YES	Abstained	YES	YES	YES
Nava (D)	0-12 0%	YES	YES	YES	YES	YES	YES	YES	YES	YES	YES	YES	YES
Niello (R)	11-1 92%	YES	NO	NO	NO	NO	NO	NO	NO	NO	NO	NO	NO
Nunez (D)	0-12 0%	YES	YES	YES	YES	YES	YES	YES	YES	YES	YES	YES	YES
Oropeza (D)	1-11 8%	YES	YES	YES	YES	YES	YES	YES	Abstained	YES	YES	YES	YES
Parra (D)	4-8 33%	YES	YES	Abstained	YES	YES	NO	YES	NO	YES	NO	YES	YES
Pavley (D)	0-12 0%	YES	YES	YES	YES	YES	YES	YES	YES	YES	YES	YES	YES
Plescia (R)	11-1 92%	YES	NO	NO	NO	NO	NO	NO	NO	NO	NO	NO	NO
Richman (R)	11-1 92%	YES	NO	Abstained	NO	NO	NO	NO	Abstained	NO	NO	NO	NO
Ridley-Thomas (D)	0-12 0%	YES	YES	YES	YES	YES	YES	YES	YES	YES	YES	YES	YES
Runner (R)	11-1 92%	YES	NO	NO	NO	NO	NO	NO	NO	NO	NO	NO	NO
Ruskin (D)	1-11 8%	YES	YES	NO	YES	YES	YES	YES	YES	YES	YES	YES	YES
Saldana (D)	0-12 0%	YES	YES	YES	YES	YES	YES	YES	YES	YES	YES	YES	YES
Salinas (D)	1-11 8%	YES	YES	Abstained	YES	YES	YES	YES	YES	YES	YES	YES	YES
Spitzer (R)	11-1 92%	YES	NO	NO	NO	NO	NO	NO	Abstained	NO	NO	NO	NO
Strickland (R)	11-1 92%	YES	NO	NO	NO	NO	NO	NO	NO	NO	NO	NO	NO
Torrico (D)	2-10 17%	YES	YES	Abstained	YES	YES	YES	YES	NO	YES	YES	YES	YES
Tran (R)	11-1 92%	YES	NO	NO	NO	NO	NO	NO	NO	NO	NO	NO	NO
Umberg (D)	0-12 0%	YES	YES	YES	YES	YES	YES	YES	YES	YES	YES	YES	YES
Vargas (D)	3-9 25%	YES	YES	Abstained	YES	YES	YES	YES	Abstained	YES	YES	YES	Abstained
Villines (R)	11-1 92%	YES	NO	NO	NO	NO	NO	NO	NO	NO	NO	NO	NO
Walters (R)	12-0 100%	NO	NO	NO	NO	NO	NO	NO	NO	NO	NO	NO	NO
Wolk (D)	3-9 25%	YES	YES	YES	YES	YES	NO	YES	Abstained	YES	YES	YES	NO
Wyland (R)	12-0 100%	NO	NO	NO	NO	NO	NO	NO	NO	NO	NO	NO	NO
Yee (D)	0-12 0%	YES	YES	YES	YES	YES	YES	YES	YES	YES	YES	YES	YES
<b>Bill result</b>		<b>VETOED</b> by Gov.	<b>VETOED</b> by Gov.	<b>FAILED</b> <b>PASSAGE</b>	<b>VETOED</b> by Gov.	<b>VETOED</b> by Gov.	<b>FAILED</b> <b>PASSAGE</b>	<b>VETOED</b> by Gov.	<b>FAILED</b> <b>PASSAGE</b>	<b>VETOED</b> by Gov.	<b>FAILED</b> <b>PASSAGE</b>	<b>SIGNED</b> by Gov.	<b>VETOED</b> by Gov.