



2006 Manufacturing Voting Record / Assemblymembers

CMTA's Manufacturing Voting Record shows that 57 percent of state legislators voted against manufacturers' interests on major bills more than half the time in the 2006 legislative session.

Click bills to view online

AB 1835	AB 2593	AB 2778	AB 32	SB 1368	SB 1414	SB 1489	SB 1737	SB 815	SB 927
CMTA: OPPOSE	OPPOSE	OPPOSE	OPPOSE	OPPOSE	OPPOSE	OPPOSE	OPPOSE	OPPOSE	OPPOSE
Increases the state minimum wage by \$1.25 next two years	Interferes with potential regulatory solution to meal and period laws	Removes fossil fuel combustion technologies from the Self-Generation Incentive Program	Increases costs on manufacturers and will not reduce overall global warming emission	Limits the available power sources to meet California's energy demands	Requires companies with over 10,000 California employees to spend 8% of their annual payroll costs on health care insurance for employees	Increases litigation by awarding more costs and attorney fees to the General's Office	Further regulates manufacturers' and retailers' products to consumers.	Doubles permanent disability workers' compensation benefits	\$60 per container tax on all containers processed at the Port of Los Angeles Long Beach

Assemblymembers

Click to Record

Assemblymember	Record	AB 1835	AB 2593	AB 2778	AB 32	SB 1368	SB 1414	SB 1489	SB 1737	SB 815	SB 927
Arzoo (R)	9-1 90%	NO	YES	NO	NO	NO	NO	NO	NO	NO	NO
Bernal (D)	0-10 0%	YES	YES	YES	YES	YES	YES	YES	YES	YES	YES
Brown, Jr. (D)	1-9 10%	YES	YES	Abstained	YES	YES	YES	YES	YES	YES	YES
Brown (D)	0-10 0%	YES	YES	YES	YES	YES	YES	YES	YES	YES	YES
Butler (R)	9-1 90%	NO	YES	NO	NO	NO	NO	NO	NO	NO	NO
Chavez (D)	0-10 0%	YES	YES	YES	YES	YES	YES	YES	YES	YES	YES
Cruz (D)	0-10 0%	YES	YES	YES	YES	YES	YES	YES	YES	YES	YES
DeSole (D)	0-10 0%	YES	YES	YES	YES	YES	YES	YES	YES	YES	YES
Doolittle (R)	8-2 80%	NO	YES	YES	NO	NO	NO	NO	NO	NO	NO
Doolittle (R)	9-1 90%	NO	YES	NO	NO	NO	NO	NO	NO	NO	NO
Evans (D)	3-7 30%	YES	YES	YES	YES	Abstained	NO	NO	YES	YES	YES
Flores (D)	5-5 50%	YES	YES	YES	YES	NO	NO	NO	YES	NO	NO
Flores (D)	0-10 0%	YES	YES	YES	YES	YES	YES	YES	YES	YES	YES
Flores (D)	1-9 10%	YES	YES	YES	YES	YES	NO	YES	YES	YES	YES
Flores (D)	0-10 0%	YES	YES	YES	YES	YES	YES	YES	YES	YES	YES
Flores (R)	9-1 90%	NO	YES	NO	NO	NO	NO	NO	NO	NO	NO
Flores (D)	0-10 0%	YES	YES	YES	YES	YES	YES	YES	YES	YES	YES
Flores (D)	0-10 0%	YES	YES	YES	YES	YES	YES	YES	YES	YES	YES
Flores (R)	8-2 80%	YES	YES	NO	NO	NO	NO	NO	NO	NO	NO
Flores (D)	0-10 0%	YES	YES	YES	YES	YES	YES	YES	YES	YES	YES
Flores (R)	10-0 100%	NO	NO	NO	NO	NO	NO	NO	NO	NO	NO
Flores (D)	0-10 0%	YES	YES	YES	YES	YES	YES	YES	YES	YES	YES
Flores (R)	9-1 90%	NO	YES	NO	NO	NO	NO	NO	NO	NO	NO
Flores (D)	1-9 10%	YES	NO	YES	YES	YES	YES	YES	YES	YES	YES
Flores (D)	0-10 0%	YES	YES	YES	YES	YES	YES	YES	YES	YES	YES
Flores (R)	8-2 80%	YES	YES	NO	NO	NO	NO	NO	NO	NO	NO
Flores (D)	0-10 0%	YES	YES	YES	YES	YES	YES	YES	YES	YES	YES
Flores (D)	0-10 0%	YES	YES	YES	YES	YES	YES	YES	YES	YES	YES
Flores (R)	9-1 90%	NO	YES	NO	NO	NO	NO	NO	NO	NO	NO
Flores (D)	1-9 10%	YES	YES	YES	YES	YES	YES	NO	YES	YES	YES
Flores (R)	7-3 70%	YES	YES	NO	YES	NO	NO	NO	NO	NO	NO
Flores (R)	9-1 90%	NO	YES	NO	NO	NO	NO	NO	NO	NO	NO
Flores (R)	9-1 90%	NO	YES	NO	NO	NO	NO	NO	NO	NO	NO
Flores (D)	0-10 0%	YES	YES	YES	YES	YES	YES	YES	YES	YES	YES
Flores (D)	0-10 0%	YES	YES	YES	YES	YES	YES	YES	YES	YES	YES
Flores (R)	8-2 80%	NO	YES	YES	NO	NO	NO	NO	NO	NO	NO
Flores (D)	2-8 20%	Abstained	YES	YES	YES	YES	Abstained	YES	YES	YES	YES
Flores (D)	1-9 10%	YES	YES	Abstained	YES	YES	YES	YES	YES	YES	YES
Flores (D)	0-10 0%	YES	YES	YES	YES	YES	YES	YES	YES	YES	YES
Flores (R)	10-0 100%	NO	Abstained	NO	NO	NO	NO	NO	NO	NO	NO

Continued on Page 3

Bill result

SIGNED by Gov.

VETOED by Gov.

SIGNED by Gov.

SIGNED by Gov.

SIGNED by Gov.

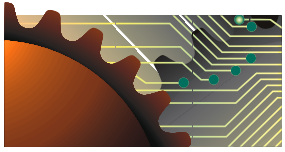
VETOED by Gov.

VETOED by Gov.

VETOED by Gov.

VETOED by Gov.

VETOED by Gov.



CALIFORNIA
MANUFACTURERS
& TECHNOLOGY
ASSOCIATION

Continued from Page 2

Assemblymembers

2006 Manufacturing Voting Record / Assemblymembers

CMTA's Manufacturing Voting Record shows that 57 percent of state legislators voted against manufacturers' interests on major bills more than half the time in the 2006 legislative session.

Click bills to view online

Bill	AB 1835	AB 2593	AB 2778	AB 32	SB 1368	SB 1414	SB 1489	SB 1737	SB 815	SB 927
	CMTA: OPPOSE	OPPOSE	OPPOSE	OPPOSE	OPPOSE	OPPOSE	OPPOSE	OPPOSE	OPPOSE	OPPOSE
	Increases the state minimum wage by \$1.25 next two years	Interferes with potential regulatory solution to meal and period laws	Removes fossil fuel combustion technologies from the Self-Generation Incentive Program	Increases costs on manufacturers and will not reduce overall global warming emission	Limits the available power sources to meet California's energy demands	Requires companies with over 10,000 California employees to spend 8% of their annual payroll costs on health care insurance for employees	Increases litigation by awarding more costs and attorney fees to the Attorney General's Office	Further regulates manufacturers' and retailers' sales to consumers.	Doubles permanent disability workers' compensation benefits	\$60 per container tax on all containers processed at the Ports of Los Angeles and Long Beach

View online **Record**

Assemblymember	Record	AB 1835	AB 2593	AB 2778	AB 32	SB 1368	SB 1414	SB 1489	SB 1737	SB 815	SB 927
er (R)	9-1 90%	NO	YES	NO	NO	NO	NO	NO	NO	NO	NO
(D)	1-9 10%	YES	YES	Abstained	YES	YES	YES	YES	YES	YES	YES
(R)	9-1 90%	NO	YES	Abstained	NO	NO	NO	NO	NO	NO	Abstained
e (D)	0-10 0%	YES	YES	YES	YES	YES	YES	YES	YES	YES	YES
r (D)	0-10 0%	YES	YES	YES	YES	YES	YES	YES	YES	YES	YES
(D)	1-9 10%	YES	YES	YES	YES	YES	YES	YES	NO	YES	YES
)	2-8 20%	YES	YES	Abstained	YES	YES	YES	YES	NO	YES	YES
ews (D)	6-4 60%	YES	YES	YES	NO	YES	NO	NO	NO	NO	NO
(R)	9-1 90%	NO	YES	NO	NO	NO	NO	NO	NO	NO	NO
rthy (R)	9-1 90%	NO	YES	NO	NO	NO	NO	NO	NO	NO	NO
od (D)	2-8 20%	YES	YES	Abstained	YES	YES	YES	YES	YES	YES	NO
anez (D)	0-10 0%	YES	YES	YES	YES	YES	YES	YES	YES	YES	YES
tjoy (R)	9-1 90%	NO	YES	NO	NO	NO	NO	NO	NO	NO	NO
h (D)	0-10 0%	YES	YES	YES	YES	YES	YES	YES	YES	YES	YES
hishi (R)	9-1 90%	NO	YES	NO	NO	NO	NO	NO	NO	NO	NO
n (D)	0-10 0%	YES	YES	YES	YES	YES	YES	YES	YES	YES	YES
(D)	0-10 0%	YES	YES	YES	YES	YES	YES	YES	YES	YES	YES
(R)	9-1 90%	NO	YES	NO	NO	NO	NO	NO	NO	NO	NO
z (D)	0-10 0%	YES	YES	YES	YES	YES	YES	YES	YES	YES	YES
eza (D)	0-10 0%	YES	YES	YES	YES	YES	YES	YES	YES	YES	YES
(D)	4-6 40%	YES	YES	YES	NO	Abstained	NO	YES	YES	YES	NO
y (D)	0-10 0%	YES	YES	YES	YES	YES	YES	YES	YES	YES	YES
ia (R)	9-1 90%	NO	YES	NO	NO	NO	NO	NO	NO	NO	NO
han (R)	8-2 80%	NO	YES	YES	NO	NO	NO	NO	NO	NO	NO
y-Thomas (D)	0-10 0%	YES	YES	YES	YES	YES	YES	YES	YES	YES	YES
er (R)	9-1 90%	NO	YES	NO	NO	NO	NO	NO	NO	NO	NO
n (D)	0-9 0%	YES	YES	YES	YES	YES	YES	YES	YES	YES	YES
na (D)	0-10 0%	YES	YES	YES	YES	YES	YES	YES	YES	YES	YES
as (D)	0-10 0%	YES	YES	YES	YES	YES	YES	YES	YES	YES	YES
er (R)	9-1 90%	NO	YES	NO	NO	NO	NO	NO	NO	NO	NO
iland (R)	9-1 90%	NO	YES	NO	NO	NO	NO	NO	NO	NO	NO
o (D)	1-9 10%	YES	YES	YES	YES	YES	YES	YES	YES	YES	NO
(R)	8-1 89%	YES	NO	NO	NO	NO	NO	NO	NO	NO	NO
rg (D)	1-9 10%	YES	YES	YES	YES	YES	YES	YES	YES	YES	Abstained
s (D)	0-10 0%	YES	YES	YES	YES	YES	YES	YES	YES	YES	YES
es (R)	9-1 90%	NO	YES	NO	NO	NO	NO	NO	NO	NO	NO
rs (R)	9-1 90%	NO	YES	NO	NO	NO	NO	NO	NO	NO	NO
(D)	2-8 20%	YES	YES	Abstained	YES	YES	NO	YES	YES	YES	YES
hd (R)	9-1 90%	NO	YES	NO	NO	NO	NO	NO	NO	NO	NO
(D)	1-9 10%	YES	YES	NO	YES	YES	YES	YES	YES	YES	YES

Bill result: SIGNED by Gov. / VETOED by Gov. / SIGNED by Gov. / SIGNED by Gov. / SIGNED by Gov. / SIGNED by Gov. / VETOED by Gov. / VETOED by Gov. / VETOED by Gov. / VETOED by Gov. / VETOED by Gov.